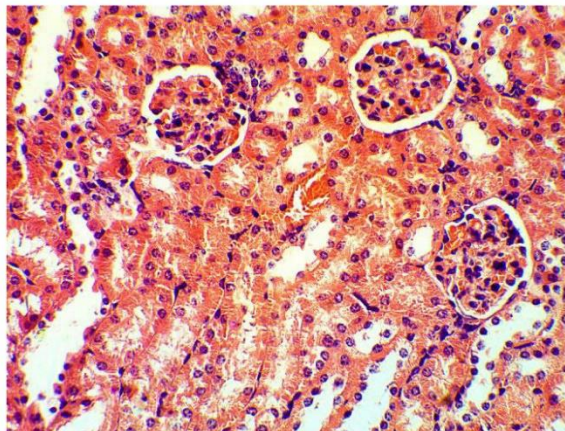
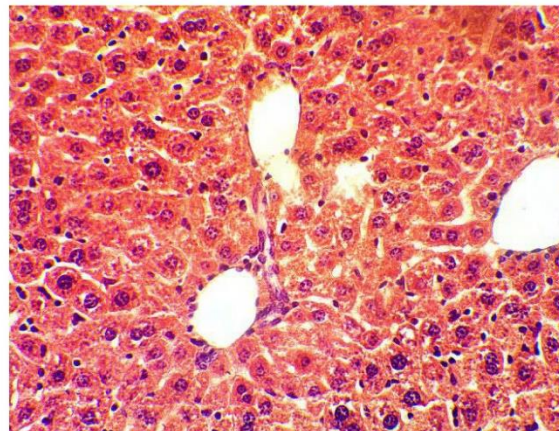
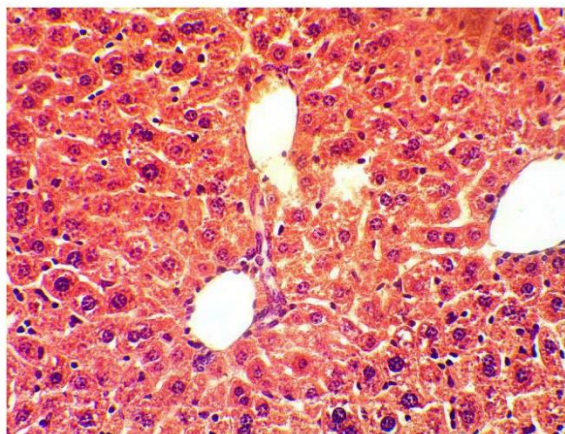
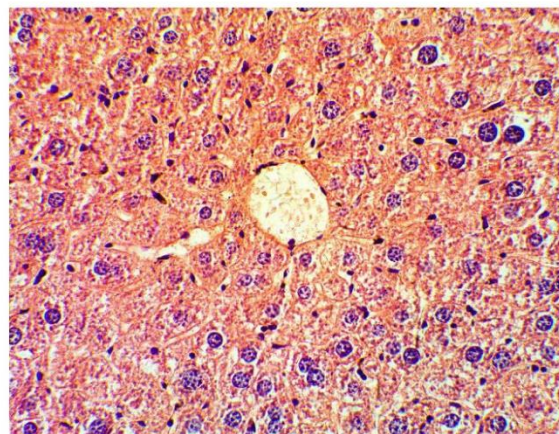


A**B****C****D**

Appendix 1. Histopathological images of kidney in control group (A) and treatment group (C); Histopathological images of Liver in control group (B) and treatment group (D).

Appendix 2. The Effects of Herbal Syrup Compared to the Placebo Based on the Leicester Cough Questionnaire Scores

	Questions	Groups	N	Mean	Std. Error	P-Value
Have you had chest or stomach pains as a result of your cough?	Q1B	Treatment	54	4.39	0.234	0.406
		Placebo	51	4.20	0.196	
	Q1A	Treatment	54	5.31	0.195	0.095
		Placebo	51	5.02	0.157	
	Q2B	Treatment	54	3.43	0.255	0.976

Have you been bothered by sputum production when you cough?	Q2A	Placebo	51	3.29	0.230	0.000***
		Treatment	54	4.80	0.248	
		Placebo	51	3.43	0.223	
Have you been tired because of your cough?	Q3B	Treatment	54	3.44	0.193	0.87
		Placebo	51	3.47	0.216	
	Q3A	Treatment	54	4.43	0.162	0.002**
		Placebo	51	3.67	0.189	
Have you felt in control of your cough?	Q4B	Treatment	54	4.11	0.149	0.529
		Placebo	51	3.94	0.196	
	Q4A	Treatment	54	5.70	0.128	0.042*
		Placebo	51	5.24	0.167	
How often during the last 2 weeks have you felt embarrassed by your coughing?	Q5B	Treatment	54	4.31	0.198	0.869
		Placebo	51	4.43	0.213	
	Q5A	Treatment	54	5.41	0.166	0.295
		Placebo	51	5.24	0.167	
In the last 2 weeks, my cough has made me feel anxious.	Q6B	Treatment	54	4.56	0.208	0.125
		Placebo	51	4.04	0.246	
	Q6A	Treatment	54	5.04	0.178	0.059
		Placebo	51	4.63	0.181	
In the last 2 weeks, my cough has interfered with my job, or other daily tasks.	Q7B	Treatment	54	4.31	0.233	0.024*
		Placebo	51	3.63	0.256	
	Q7A	Treatment	54	4.63	0.181	0.022*
		Placebo	51	4.02	0.199	
In the last 2 weeks, I felt that my cough interfered with the overall enjoyment of my life.	Q8B	Treatment	54	3.46	0.211	0.131
		Placebo	51	3.27	0.289	
	Q8A	Treatment	54	4.48	0.176	0.010*
		Placebo	51	3.90	0.225	
In the last 2 weeks, exposure to paints or fumes has made me cough.	Q9B	Treatment	54	3.94	0.305	0.802
		Placebo	51	3.78	0.287	
	Q9A	Treatment	54	4.22	0.253	0.170
		Placebo	51	3.75	0.252	
In the last 2 weeks, has your cough disturbed your sleep?	Q10B	Treatment	54	3.54	0.245	0.134
		Placebo	51	2.98	0.175	
	Q10A	Treatment	54	4.83	0.211	0.011*
		Placebo	51	3.92	0.275	
In the last 2 weeks, how many times a day have you had coughing bouts?	Q11B	Treatment	54	2.70	0.143	0.160
		Placebo	51	2.39	0.143	
	Q11A	Treatment	54	3.76	0.132	0.017*
		Placebo	51	3.22	0.161	
In the last 2 weeks, my cough has made me feel frustrated.	Q12B	Treatment	54	5.67	0.196	0.792
		Placebo	51	5.29	0.262	
	Q12A	Treatment	54	6.13	0.154	0.120
		Placebo	51	5.43	0.244	
In the last 2 weeks, my cough has made me feel fed up.	Q13B	Treatment	54	4.04	0.251	0.621
		Placebo	51	3.86	0.242	
	Q13A	Treatment	54	5.35	0.253	0.962
		Placebo	51	5.43	0.244	
In the last 2 weeks, have you suffered from a hoarse voice as a result of your cough?	Q14B	Treatment	54	3.91	0.213	0.154
		Placebo	51	3.47	0.179	
	Q14A	Treatment	54	5.00	0.196	0.002**
		Placebo	51	4.06	0.218	
In the last 2 weeks, have you had a lot of energy?	Q15B	Treatment	54	3.78	0.207	0.281
		Placebo	51	4.10	0.235	

	Q15A	Treatment	54	4.74	0.213	0.160
		Placebo	51	4.33	0.199	
In the last 2 weeks, have you worried that your cough may indicate serious illness?	Q16B	Treatment	54	4.54	0.232	0.735
		Placebo	51	4.57	0.280	
	Q16A	Treatment	54	5.48	0.188	0.012*
		Placebo	51	4.63	0.248	
In the last 2 weeks, have you been concerned that other people think something is wrong with you, because of your cough?	Q17B	Treatment	54	5.07	0.240	0.230
		Placebo	51	4.57	0.280	
	Q17A	Treatment	54	5.19	0.221	0.101
		Placebo	51	4.63	0.248	
In the last 2 weeks, my cough has interrupted conversation or telephone calls.	Q18B	Treatment	54	4.19	0.233	0.372
		Placebo	51	3.90	0.262	
	Q18A	Treatment	54	4.43	0.174	0.021*
		Placebo	51	3.78	0.196	
In the last 2 weeks, I feel that my cough has annoyed my partner, family or friends.	Q19B	Treatment	54	4.46	0.232	0.609
		Placebo	51	4.29	0.234	
	Q19A	Treatment	54	5.35	0.210	0.246
		Placebo	51	5.12	0.211	

Note: $P > 0.05$ non-significant. * $P < 0.05$, ** $P < 0.01$, *** $P < 0.001$ when compared between two treatment arms.